



FREEHOLD

Bungalow - Detached

# 9 TUDOR CLOSE, MILL HILL, LONDON, NW7 2BG

Offers In Excess Of

# £1,500,000

## FEATURES

- Detached four bedroom bungalow
- Over 2200 ft.<sup>2</sup> of usable accommodation
- 2 mature self-contained stunning gardens
- Detached garage at side with further out houses



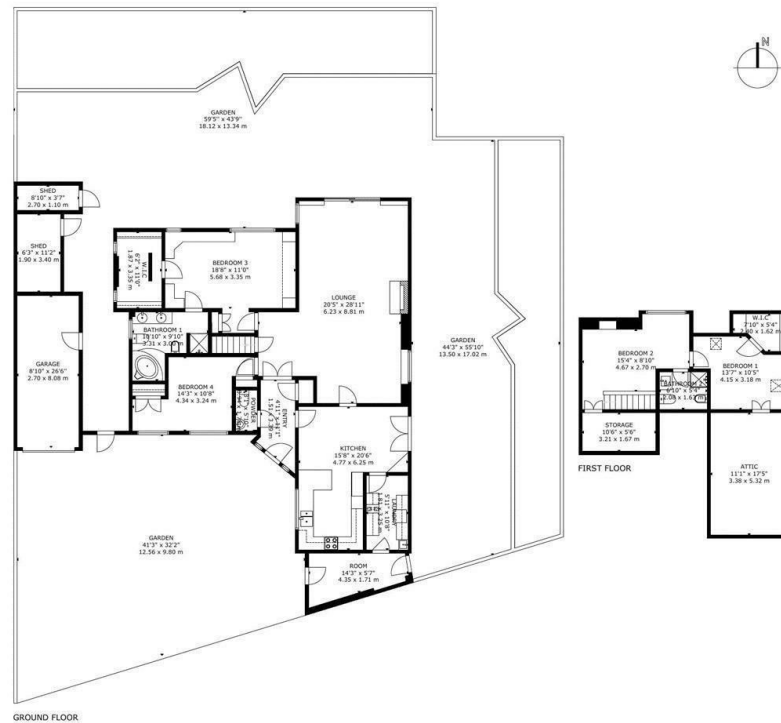
# 4 Bedroom Bungalow - Detached located in Mill Hill

Space Residential are excited to present a much sought-after detached four-bedroom bungalow nestled amongst spacious mature grounds and located in a private gated close in the heart of Mill Hill.

The current layout is spread across two floors, with the ground floor comprising; a spacious living room, a large eat-in kitchen/breakfast room with a separate utility room and a door to a self-contained hairdressing salon. Off the entrance hallway, there is a guest WC with double doors to the expansive living room, a master bedroom with en-suite bathroom and a walk wardrobe. There is also a second bedroom on the ground floor.

On the first floor are of two bedrooms, a shower room and access to a large loft offering further storage.

Outside there are two separate self-contained fantastic gardens with a variety of mature plants shrubs and trees offering seclusion and privacy in a peaceful quiet secluded location, backing onto the neighbouring gardens on Wise Lane.



GROSS INTERNAL AREA  
TOTAL: 208 m<sup>2</sup>/2,233 sq ft  
GROUND FLOOR: 149 m<sup>2</sup>/1,599 sq ft, FIRST FLOOR: 59 m<sup>2</sup>/635 sq ft  
EXCLUDED AREA: GARDEN: 742 m<sup>2</sup>/7,989 sq ft, GARAGE: 22 m<sup>2</sup>/235 sq ft, SHED: 10 m<sup>2</sup>/105 sq ft  
SIZE AND DIMENSIONS ARE APPROXIMATE, ACTUAL MAY VARY

Call us on

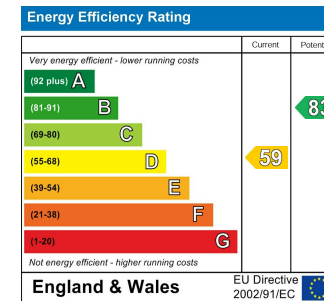
**0208 906 2222**

[info@spaceresidential.com](mailto:info@spaceresidential.com)

[spaceresidential.com](http://spaceresidential.com)

**Council Tax Band**

**G**



Agents Note: Whilst every care has been taken to prepare these particulars, they are for guidance purposes only. All measurements are approximate and are for general guidance purposes only and whilst every care has been taken to ensure their accuracy, they should not be relied upon and potential buyers are advised to recheck the measurements.

